

MAKE YOUR SOMEDAY NOW



LANDMARK

 BROUGHT TO YOU BY
HEARTLAND

TOP 5

EXTERIOR FEATURES

- 1| Beast Basement: 3-sided accessed basement with 30% more storage, clean paneled compartments and slam latch doors
- 2| "Hidden" main basement ceiling mounted MORryde tool tray
- 3| Lightweight, non-wood Azdel laminated sidewalls with laminated slide-out end walls
- 4| MORryde air compressor mounted door side with off door side quick connect port and 2.5 gallon tank
- 5| "Glide Ride" 8,000lb Dexter axles on H-range tires w/ 3 3/8" brakes, MORryde LRE 4000 and gas shocks



LM CHESAPEAKE

LENGTH - 43'1" | DRY - 15,698 LBS. | HEIGHT - 13'3"
GVWR - 18,000 LBS. | HITCH - 3,000 LBS. | SLEEP CAPACITY - 3-4



LM LAFAYETTE

LENGTH - 43'10" | DRY - 15,251 LBS. | HEIGHT - 13'3"
GVWR - 18,000 LBS. | HITCH - 3,918 LBS. | SLEEP CAPACITY - 5-6



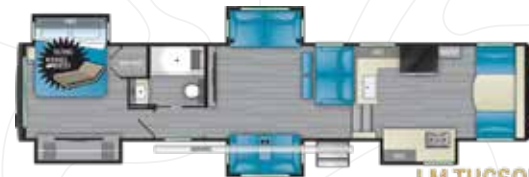
LM NEWPORT

LENGTH - 43'7-1/2" | DRY - 14,843 LBS. | HEIGHT - 13'3"
GVWR - 18,000 LBS. | HITCH - 3,048 LBS. | SLEEP CAPACITY - 3-4



LM SCOTTSDALE

LENGTH - 43'10" | DRY - 16,098 LBS. | HEIGHT - 13'3"
GVWR - 18,000 LBS. | HITCH - 3,415 LBS. | SLEEP CAPACITY - 3-4



LM TUCSON

LENGTH - 43'10" | DRY - 15,657 LBS. | HEIGHT - 13'3"
GVWR - 18,000 LBS. | HITCH - 3,745 LBS. | SLEEP CAPACITY - 3-4

TOP 5

INTERIOR FEATURES

- 1 "Comfort Stay" In-Command multiplex coach controls including lighting, HVAC, dimmers, and more
- 2 Oversized walk-in closets with deep shelves, double hanging rods, cedar lining and washer/dryer cabinet
- 3 "Spa Baths" with solid surface sinks, marble look shower, removable shower head and teak wood seat
- 4 "Ultra-Upper Deck" bedroom with power tilting king bed, deep residential dressers and CPAP nightstands
- 5 "Tech-centric" dual supercharging USBs, bedroom USBs and 2 wireless charging stations in each unit, tire pressure monitor prep



LANDMARK HOME PACKAGE

- Multi-plex power system with touchscreen & app control
- MORryde LRE 4000 rubber suspension system
- Aluminum wheels
- 17.5" H-range tires
- Electric power cord reel
- Surge protector
- 1000 Watt inverter
- 80 Amp convertor
- 50 Amp service
- Sofa end tables w/power/USB outlets
- Backlit kitchen backsplash
- Frameless dual pane windows
- MORryde rubber cushion pin box
- Cordless vac
- MORryde slide out tool tray in main basement
- 20cu.ft. residential fridge
- Slow-close ball bearing drawer guides
- Washer/dryer prep
- Single basin farmhouse kitchen sink with drying rack and sink covers
- 5,100BTU electric fireplace
- MORryde air compressor kit with door and off-door side air ports
- 50/55/65" LED flat screen TV w/AM, FM, CD, and DVD stereo
- Hardwood stiles on all cabinetry
- Lit hardwood slide fascia
- Winegard Traveler satellite wiring prep
- 300W solar prep
- LED ceiling lighting
- Generator prep
- Solid surface molded bath sinks
- Alumiguard awnings
- Dual satellite prep
- 39" exterior TV (Most Models)

AWAY PACKAGE

- Low-level nightlights on motion sensors
- First Alert safe
- 2.4 cu.ft. stainless steel oven (2 in-wall ovens standard in Newport)
- 4-burner stainless steel stove with high output main burner (Most Models)
- Adjustable bedroom reading lamps
- MORryde "Zero G" entry step
- MORryde Power tilt bed
- King mattress
- Tile look shower w/ fold down teak wood seat
- Universal docking station w/ water filter
- 3-way water pump switch
- Ceiling fan with wooden shroud (N/A Lafayette)
- Dual 30lb LP tanks
- High-gloss fiberglass
- Dual battery hookup
- Dual battery disconnect
- 6-point "Level Up" hydraulic leveling system
- Aluminum framed vacuum bonded laminated main and upper deck floors
- Aluminum framed pinch rolled laminated side walls and end wall
- 45,000BTU whisper quiet AC system (3 standard 15,000 BTU air conditioners)
- Night roller shades
- 32" or 39" Bedroom TV
- 8-USB outlets
- Energy management system
- Double power awnings w/ LED lights
- Power theater seating w/ massage, heat and floor lighting
- Oversized Euro entry door latch and oversized grab handle
- Winegard Air360+ TV antenna & WIFI prep
- YETI cold weather upgrade (heat tape on water lines, heat pads on tanks)
- Hardwood interior steps
- Fantastic Vent fan with rain sensor-bathrooms (applicable floorplans have 2)
- Heat Pump on upper deck A/C
- Independent slide out switches

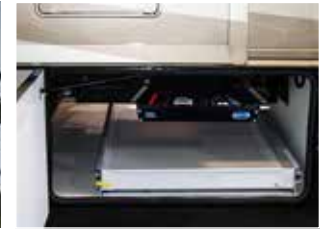
OPTIONAL EQUIPMENT PACKAGE:

- Heat Pump to Main A/C (Heat pump on upstairs AC standard)
- Washer/Dryer (Stackable 2pc in Newport, Lafayette, Scottsdale and Chesapeake, combo unit in Tucson)
- Dishwasher (Newport only)
- 5.5 KW LP Generator
- Hi-Rise Coffee Table with Storage
- Pantry in place of 1/2 bath (Lafayette)
- 300W Solar System with 2000W Inverter

SPECIAL FEATURES

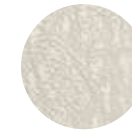


Stor More Storage

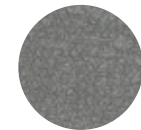


MORryde Tool Tray

INTERIOR FABRIC DECOR OPTIONS

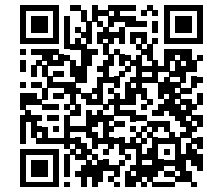


Sunrise



Moonbeam

VISIT US ONLINE



For more information and to take a virtual walk-through, visit www.heartlandrvs.com

Your authorized Heartland dealer:



Product information is as accurate as possible as of the date of publication of this brochure. Due to Heartland's commitment to continuous product improvement, floorplans, materials, components, features, measurements, specifications, options, etc. are subject to change at any time without notice or obligation. In certain conditions some additional equipment may be needed. Photos may show optional equipment or props used for photography purposes only. Heartland has listed the approximate base weight of the trailer without the optional equipment included. Optional equipment will impact the weight of the trailer. Please locate the weight sticker attached to the trailer you are considering for the most accurate trailer weight. Tow Vehicle Caution: Owners of Heartland recreational vehicles are solely responsible for the selection and proper use of tow vehicles. All customers should consult with the motor vehicle manufacturer or their dealer concerning the purchase and use of suitable tow vehicles for Heartland products. Heartland disclaims any liability or damages suffered as a result of the selection, operation, use or misuse of a tow vehicle. Heartland's limited warranty does not cover damage to the recreational vehicle or the tow vehicle as a result of the selection of the tow vehicle. Overall length for a Fifth Wheels is defined as the body length of the trailer excluding hitch meaning bumper to cap. The overall length for a Travel Trailer is defined as the body length of the trailer including hitch, meaning bumper to hitch/pin. It does not include rear ladder of spare tire. Optional pin boxes will affect overall length. SPRING 12/22 (REV 1)