



TOP 5

EXTERIOR FEATURES

- 1| Beast Basement-our 3-sided accessed basement with 30% more storage, clean paneled compartments and slam latch doors
- 2| "Hidden" main basement ceiling mounted MORryde tool tray
- 3| Lightweight, non-wood Azdel laminated sidewalls with laminated slide-out end walls
- 4| MORryde air compressor mounted door side with off door side quick connect port and 2.5 gallon tank
- 5| "Glide Ride" 8,000lb Dexter axles on H-range tires w/ 3 3/8" brakes, MORryde LRE 4000 and gas shocks

TOP 5

INTERIOR FEATURES

- 1| "Secure Stay" ASA multiplex coach controls including HVAC, dimmers and an interior & exterior cameras
- 2| Angled walk-in closets with deep shelves, double hanging rods, cedar lining and washer/dryer prep
- 3| "Spa Baths" with solid surface sinks, marble look shower, removable shower head and teak wood seat
- 4| "Ultra-Upper Deck" bedroom with power tilting king bed, 22" deep residential dressers and CPAP nightstands
- 5| "Tech-centric" dual supercharging USBs, bedroom USBs and 3 wireless charging stations in each unit

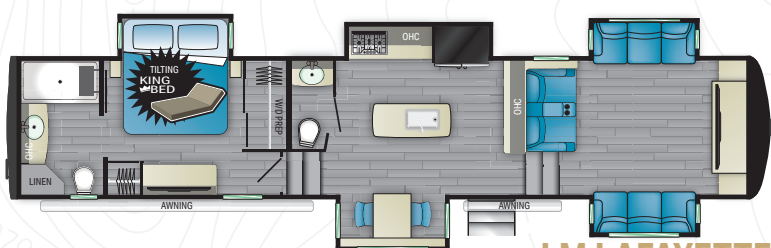


LANDMARK



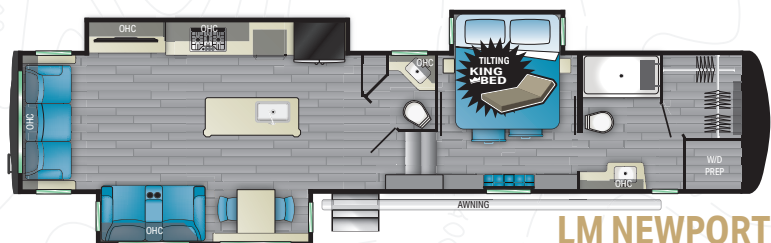
LM CHESAPEAKE

LENGTH - 43' 1" | DRY - 15,698 LBS.
HEIGHT - 13' 3" | GVWR - 18,000 LBS.
HITCH - 3,000 LBS. | SLEEP CAPACITY - 3-4



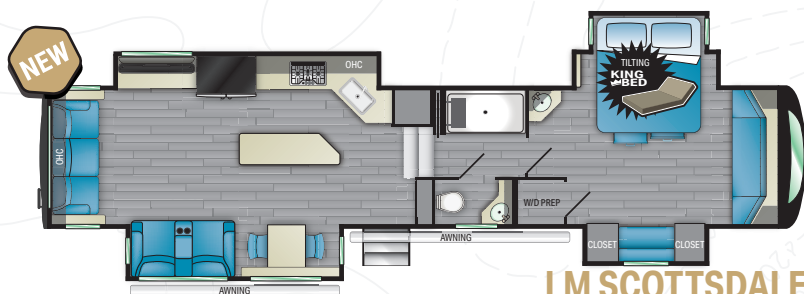
LM LAFAYETTE

LENGTH - 43' 10" | DRY - 15,251 LBS.
HEIGHT - 13' 3" | GVWR - 18,000 LBS.
HITCH - 3,918 LBS. | SLEEP CAPACITY - 5-6



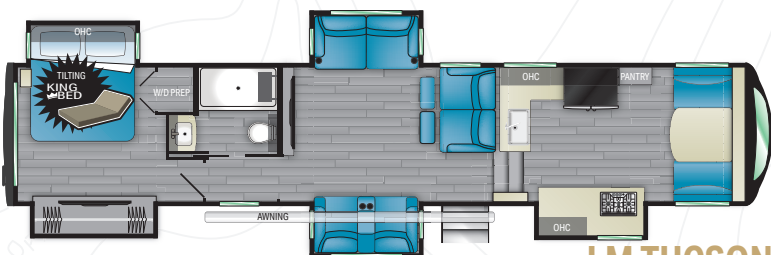
LM NEWPORT

LENGTH - 43' 7-1/2" | DRY - 14,843 LBS.
HEIGHT - 13' 3" | GVWR - 18,000 LBS.
HITCH - 3,048 LBS. | SLEEP CAPACITY - 3-4



LM SCOTTSDALE

LENGTH - 43' 10" | DRY - TBD LBS.
HEIGHT - 13' 3" | GVWR - TBD LBS.
HITCH - TBD LBS. | SLEEP CAPACITY - 3-4



LM TUCSON

LENGTH - 43' 10" | DRY - 15,657 LBS.
HEIGHT - 13' 3" | GVWR - 18,000 LBS.
HITCH - 3,745 LBS. | SLEEP CAPACITY - 3-4

Product information is as accurate as possible as of the date of publication of this brochure. Due to Heartland's commitment to continuous product improvement, floorplans, materials, components, features, measurements, specifications, options, etc. are subject to change at any time without notice or obligation. In certain conditions some additional equipment may be needed. Photos may show optional equipment or props used for photography purposes only. Heartland has listed the approximate base weight of the trailer without the optional equipment included. Optional equipment will impact the weight of the trailer. Please locate the weight sticker attached to the trailer you are considering for the most accurate trailer weight. Tow Vehicle Caution: Owners of Heartland recreational vehicles are solely responsible for the selection and proper use of tow vehicles. All customers should consult with the motor vehicle manufacturer or their dealer concerning the purchase and use of suitable tow vehicles for Heartland products. Heartland disclaims any liability or damages suffered as a result of the selection, operation, use or misuse of a tow vehicle. Heartland's limited warranty does not cover damage to the recreational vehicle or the tow vehicle as a result of the selection of the tow vehicle. Overall length for a Fifth Wheel is defined as the body length of the trailer excluding hitch meaning bumper to cap. The overall length for a Travel Trailer is defined as the body length of the trailer including hitch, meaning bumper to hitch/pin) It does not include rear ladder of spare tire. Optional pin boxes will affect overall length. 7/21