

TAKE THE TRAIL THAT LEADS
TO YOUR DREAMS...



TRAVEL TRAILERS

KING SLIDES

TENT ENDS

FX 7.5' WIDE

FIFTH WHEELS

*A FULL LINEUP OF
ULTRA LIGHTWEIGHT
TOWABLES*



True Lightweight Luxury.

Choose the NORTH TRAIL by Heartland Recreational Vehicles for the ultimate in ultra lightweight luxury and value! The NORTH TRAIL's all-aluminum, laminated construction provides unmatched strength and support - providing your family with years of carefree use. The interiors of the NORTH TRAIL are open and spacious with numerous multiple slide-out floorplan arrangements. It's NORTH TRAIL models like this one that make it hard for us to convince customers this really is an ultra light weight unit!



BEDROOM SIDE



With a clean exterior look featuring sleek graphics, an aerodynamic front end design and LP bottle cover, the NORTH TRAIL looks good behind any tow vehicle!



Flip around entertainment centers allow you to use one LCD TV for both the living area or the bedroom saving you space and the expense of a second TV.

TRAVEL TRAILERS



Whether it's game time, meal time, or bedtime
- this flexible dinette is perfect for the kids.!

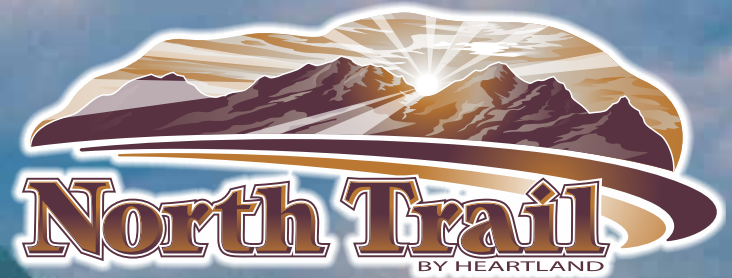
Wide open, spacious floorplans are the norm in the NORTH TRAIL line of ultra light weight towables. While large kitchen slide-outs like this are typically reserved for coaches costing thousands more, this NORTH TRAIL model provides a truly wide-open feel, as well as large base cabinet and overhead storage, over-sized windows and a sofa and dinette that both convert into beds for additional sleeping capacity.



(Travel Trailers Only)



INCREDIBLE TOWING
AND BALANCE!



NORTH TRAIL ultra lightweight towables are designed with young families in mind! Just take a look at this model with a convenient dinette built right in the bunkhouse area, as well as an entertainment center, large base cabinet storage for clothes and games and more. The dinette makes into a bed for added sleeping space.





This bedroom is typical of most NORTH TRAIL units, featuring a large queen bed, an abundance of overhead cabinets, matching shirt closets, nightstands, and two windows for great ventilation.



When it comes to underbed storage - NORTH TRAIL has thought of you - providing two deep pull-out drawers which can be accessed even when someone is on the bed!

LARGER PASS THROUGH STORAGE allows NORTH TRAIL owners to store larger items such as this full-size cooler!



WINE



COFFEE



BREEZE

LUXURIOUS DECORS

Choose from three elegant decors featuring durable fabrics on the furnishings and window coverings.

Heartland's optional ToyLok is perfect for quickly and easily securing bikes, grills, furniture and anything else that needs to be secured when you leave your site unattended.



More Storage!

NORTH TRAIL ultra lightweight towables by Heartland simply offer more well-thought-out, planned storage opportunities than any other brands in their class! Just look at the incredible amount of storage provided in just the kitchen area of this one NORTH TRAIL travel trailer! You will be amazed at what you can take with you when you travel in a NORTH TRAIL.



NORTH TRAIL is one of the few ultra lightweights to feature full-extension, steel ball-bearing drawer guides for maximum storage space, strength and ease of use. Don't settle for less - choose NORTH TRAIL as the best overall value for your money!



Popular in many of today's motorhomes, NORTH TRAIL's combination range top/convection microwave oven is easily operated by a single set of controls. Featuring three high-output burners, and a convection oven that can bake, this great design allows for additional overhead storage opportunities!



YOUR LAMINATED WORLD... *Strength,*

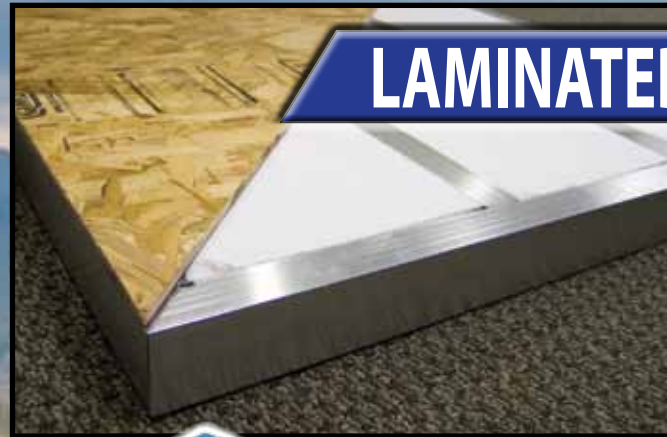


Some companies stand behind their products. We stand on top of ours. These 21 North Trail employees are so confident in the quality of their own work they eagerly jumped at the opportunity to demonstrate the strength and durability of Heartland's laminated construction.



OVER 1,500 lbs.!

While you want to avoid walking on other light weight towables roofs - we were able to easily put this Rhino™ four wheeler with a driver on the roof of the NORTH TRAIL Trailer featuring ALL ALUMINUM trusses with tapered Block Foam Bricks - laminated together for a longer lasting, much STRONGER construction!



LAMINATED FLOOR SYSTEM

NORTH TRAIL's LAMINATED Floor System is one of the **STRONGEST FLOORS** in the industry! Featuring sturdy 2.5" Aluminum Framing; thick Block Foam Insulation; One-Piece Seamless Decking and a Thermo-Board Luan on the bottom. All of this is Laminated together for Maximum Strength and Insulation R Value - virtually eliminating flex in the floor!



Heartland builds recreational vehicles with as many residential features and construction methods as possible and we are excited to introduce this 3" Laminated Floor System in our top three lines of fifth wheels.

Choose Heartland for Maximum Strength; Maximum Insulation Value; and Minimal Flex!!



HEARTLAND's 3" LAMINATED FLOOR

* 3" Floor construction on King Slide Travel Trailers and Fifth Wheels.
2" Floor construction on Travel Trailers, Tent Ends and FX models.

NORTH TRAIL's LAMINATED Floor Construction easily supported over 1,800 lbs. of Water Jugs in one spot - resulting in less than 1/4" of flex!!

LAMINATED WALL SYSTEM

Durability & Comfort BEYOND COMPARE!

The combination of these three systems bring you the Strongest and Lightest construction available while also providing unparalleled noise reduction, thermal insulation and durability. Protecting your investment is important to HEARTLAND. Laminated construction provides that protection in addition to offering peace of mind that you will be spending more time enjoying your family and travels than worrying about repairing your RV.

LAMINATED ROOF SYSTEM



Lightweight
ALUMINUM

**2" THICK
SIDEWALLS!**



Just an 1/8" thick foam cup protects your hand from scalding hot coffee... imagine what nearly 2" of block foam does for your Laminated Heartland Sidewall!

Double Welded, Fully Laminated
Sidewall Construction

BEST-IN-CLASS

- INSULATION - R VALUE
- NOISE REDUCTION
- DURABILITY
- STRENGTH
- LOOKS



- RUBBER SKIN
- WOOD DECKING
- BLOCK FOAM INSULATION
- ALUMINUM RIBS & PERIMETER
- DECORATIVE, TEXTURED CEILING VINYL

3 INCHES - FIVE LAYERS



Strength, Durability & Comfort BEYOND COMPARE!

SOUND BARRIER



THERMAL EFFICIENT

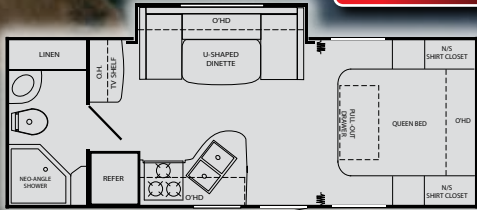


SUPER STRENGTH



TRAVEL TRAILERS

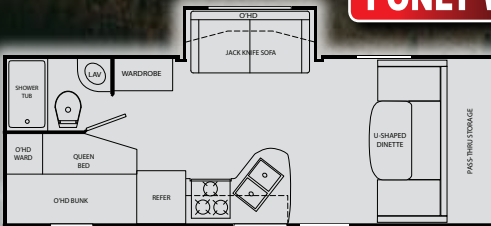
I ONLY WEIGH 4,361 lb



21FBS

GVWR: 6,900 lb.
Dry: 4,361 lb.
Hitch: 390 lb.
Length: 26'-4"
Height: 9'-10"

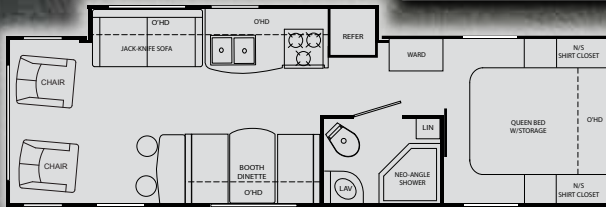
I ONLY WEIGH 4,595 lb



22FDS

GVWR: 6,900 lb.
Dry: 4,595 lb.
Hitch: 374 lb.
Length: 26'-10"
Height: 9'-10"

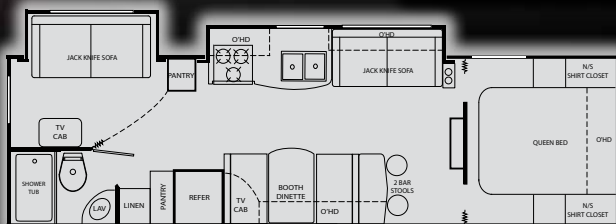
I ONLY WEIGH 5,290 lb



28RLS

GVWR: 6,900 lb.
Dry: 5,290 lb.
Hitch: 690 lb.
Length: 32'-0"
Height: 9'-10"

I ONLY WEIGH 5,277 lb



31BHD

GVWR: 6,900 lb.
Dry: 5,277 lb.
Hitch: 465 lb.
Length: 32'-7"
Height: 9'-10"

I ONLY WEIGH 5,081 lb

GVWR: 6,900 lb.
Dry: 5,081 lb.
Hitch: 555 lb.
Length: 31'-10"
Height: 9'-10"

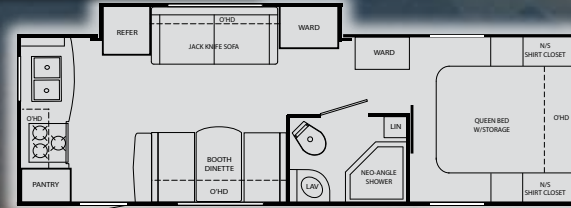


28OBH



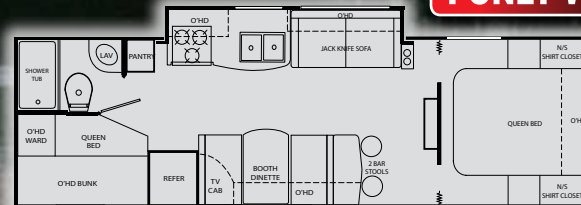
I ONLY WEIGH 5,154 lb

GVWR: 6,900 lb.
Dry: 5,154 lb.
Hitch: 620 lb.
Length: 30'-3"
Height: 9'-10"



26RKS

I ONLY WEIGH 4,900 lb



28BHS

GVWR: 6,900 lb.
Dry: 4,900 lb.
Hitch: 430 lb.
Length: 31'-10"
Height: 9'-10"

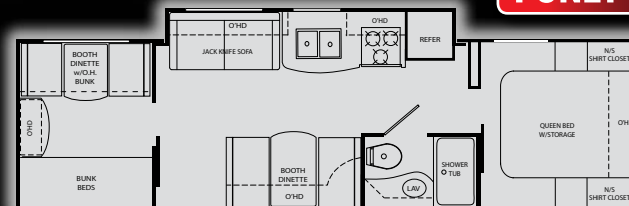
I ONLY WEIGH 5,434 lb



31RED

GVWR: 6,900 lb.
Dry: 5,434 lb.
Hitch: 610 lb.
Length: 32'-7"
Height: 9'-10"

I ONLY WEIGH 5,429 lb

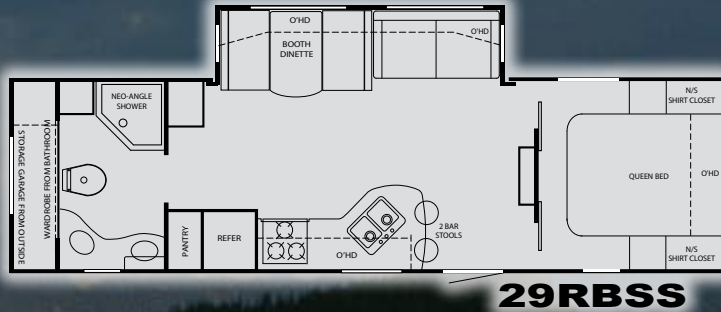


31QBS

GVWR: 6,900 lb.
Dry: 5,429 lb.
Hitch: 675 lb.
Length: 33'-5"
Height: 9'-10"

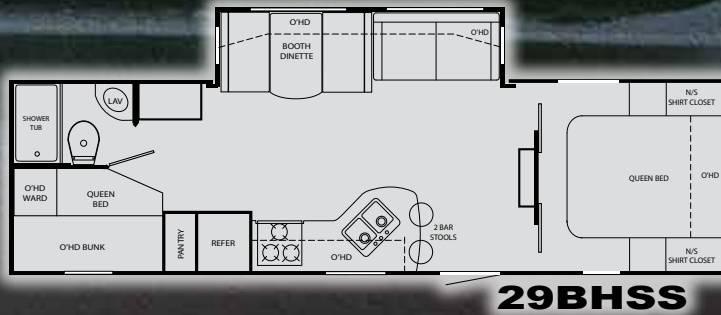
KING SLIDES

I ONLY WEIGH 6,450 lb



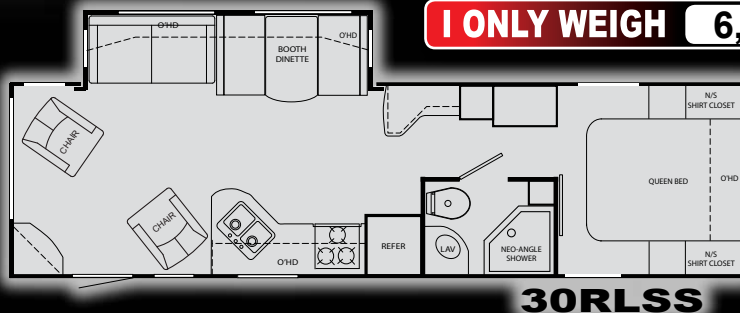
GVWR: 8,600 lb.
Dry: 6,450 lb.
Hitch: 718 lb.
Length: 33'-5"
Height: 10'-10"

I ONLY WEIGH 6,470 lb



GVWR: 8,600 lb.
Dry: 6,470 lb.
Hitch: 730 lb.
Length: 33'-5"
Height: 10'-10"

I ONLY WEIGH 6,493 lb



GVWR: 8,600 lb.
Dry: 6,493 lb.
Hitch: 810 lb.
Length: 34'-5"
Height: 10'-10"

I ONLY WEIGH 6,740 lb



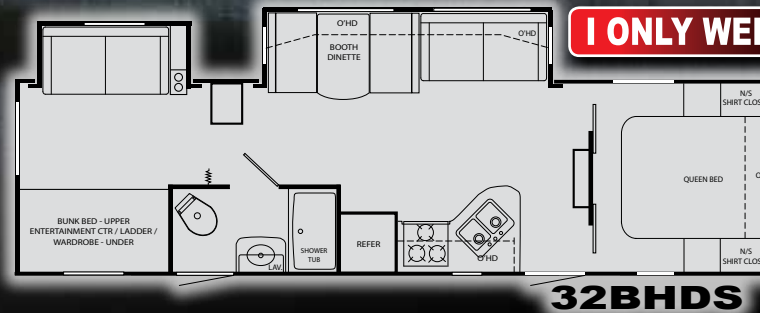
GVWR: 8,600 lb.
Dry: 6,740 lb.
Hitch: 780 lb.
Length: 34'-11"
Height: 10'-10"

I ONLY WEIGH 6,612 lb



GVWR: 8,600 lb.
Dry: 6,612 lb.
Hitch: 786 lb.
Length: 33'-11"
Height: 10'-10"

I ONLY WEIGH 6,995 lb



GVWR: 8,600 lb.
Dry: 6,995 lb.
Hitch: 814 lb.
Length: 35'-5"
Height: 10'-10"

I ONLY WEIGH 6,999 lb



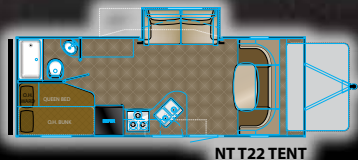
GVWR: 8,600 lb.
Dry: 6,999 lb.
Hitch: 708 lb.
Length: 35'-5"
Height: 10'-10"

TENT ENDS...



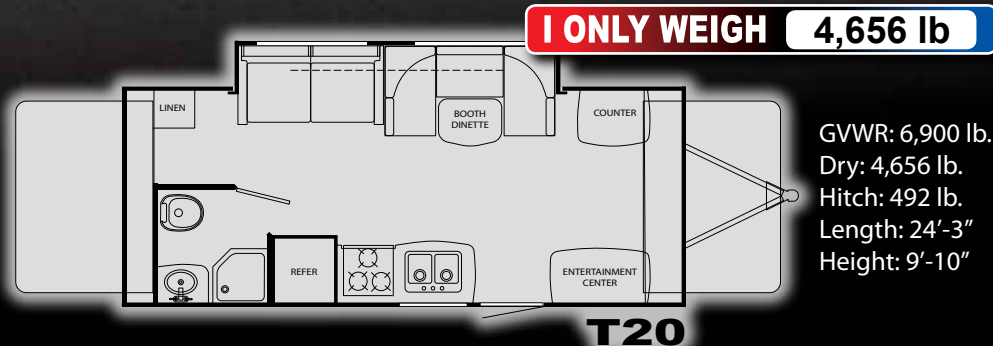
NORTH TRAIL Tent End models offer all the benefits of NORTH TRAILS lightweight laminated construction in a full side travel trailer with the addition of fold out sleeping quarters with durable soft enclosures featuring screened windows, easy setup and roomy sleeping accommodations for two adults per Tent End.

COMING SOON



NT T22 TENT

GVWR: 6,900 lb.
Dry: TBD
Hitch: TBD
Length: TBD
Height: 9'-10"



I ONLY WEIGH 4,656 lb

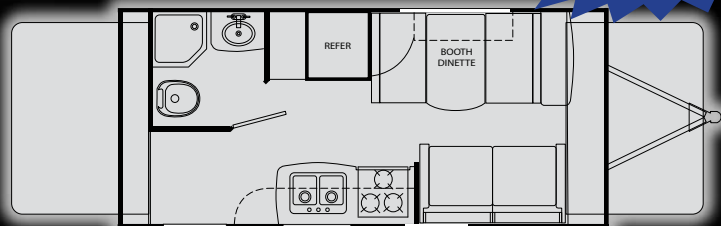
GVWR: 6,900 lb.
Dry: 4,656 lb.
Hitch: 492 lb.
Length: 24'-3"
Height: 9'-10"

T20



NORTH TRAIL Tent End owners enjoy abundant storage areas for all the necessary gear tucked away behind beautiful hardwood cabinet doors. Large dinettes provide comfortable seating for the whole family to enjoy mealtime, games or just hanging out..

**COMING
SOON**



T19

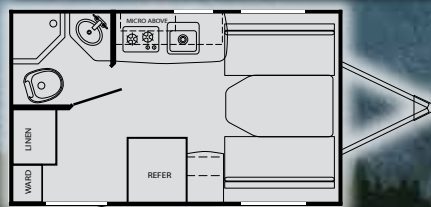
GVWR: 6,900 lb.
Dry: TBD
Hitch: TBD
Length: 21'-2"
Height: 9'-10"

North Trail FX



**7.5 Foot
WIDE...**

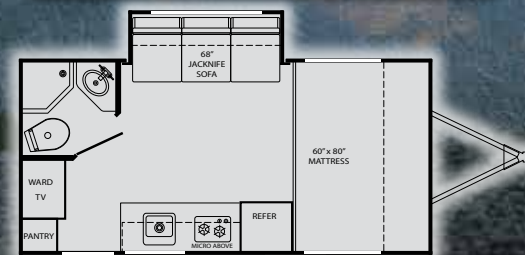
I ONLY WEIGH 2,795 lb



FX13

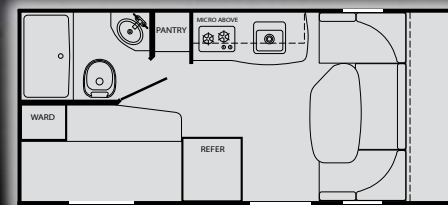
GVWR: 3,500 lb. Length: 16'-10"
Dry: 2,795 lb. Height: 9'-10"
Hitch: 208 lb.

I ONLY WEIGH 3,785 lb



FX18

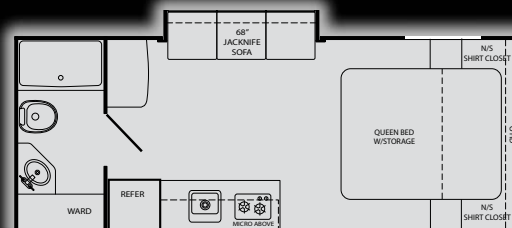
GVWR: 4,900 lb. Length: 21'-2"
Dry: 3,785 lb. Height: 9'-10"
Hitch: 344 lb.



FX19

I ONLY WEIGH 3,584 lb

GVWR: 4,900 lb. Length: 21'-2"
Dry: 3,584 lb. Height: 9'-10"
Hitch: 536 lb.



FX21

I ONLY WEIGH 3,990 lb

GVWR: 4,900 lb. Length: 24'-5"
Dry: 3,990 lb. Est. Height: 9'-10"
Hitch: 390 lb. Est.

FIFTH WHEELS.

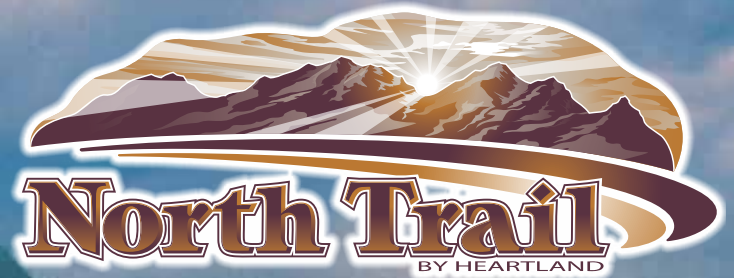


NORTH TRAIL's sleek, aerodynamic front cap translates into increased fuel efficiency for our owners which adds to the tremendous value of this coach.



When it comes to interior spaciousness, the NORTH TRAIL easily wins "Best in Class"! You'll never lack for elbow room or storage space in one of these fifth wheel layouts.

The NORTH TRAIL ultra lightweight fifth wheel by Heartland Recreational Vehicles is truly one of the most value-packed coaches ever to hit the market in this price range! Featuring an abundance of Amish-crafted hardwood doors and drawers with full-extension steel ball-bearing drawer guides, radiused countertops, decorative glass inserts in the overheads and oil-rubbed bronze hardware - the NORTH TRAIL fifth wheel rivals many traditional luxury fifth wheels in terms of interior eye appeal and features!



Surrounded by beautiful Amish-crafted hardwood cabinetry including large overhangs, a pantry and entertainment center built for today's popular flat screen TVs, the roomy dinette in this NORTH TRAIL fifth wheel features a removable table that can be used outdoors.



The NORTH TRAIL's large neo-angle shower and nice sized lav base and mirrored medicine cabinet rival those found in much larger coaches - costing thousands more!

Competitors Smaller 70" Beds Leave Your Feet Hanging Over the Edge!!



You'll appreciate the interior spaciousness found in the bedroom and bath area of the NORTH TRAIL fifth wheel - smartly designed with deep wardrobes, a built-in shelf in the headboard area with electrical outlets and individual lights.



Talk about Strength! The NORTH TRAIL's Laminated Roof is not only strong enough to walk on, it's strong enough for you and your friends to watch the race from!



The CROWNED LAMINATED ROOF is unique in the ultra lightweight towable marketplace - promoting snow, water and debris run-off!



NORTH TRAIL's TRULY AERODYNAMIC Front Fiberglass Cap design offers MAXIMUM Fuel Efficiency, while the Upgraded LED Lights Provide Long-Term Durability and Safety as they are Brighter and Easier to See!



Our owners enjoy the benefit and flexibility provided by our Inside/ Outside Free Standing Dinette Table. Take it outside when you want to Grill while listening to your favorite music through our stereo Exterior Speakers!

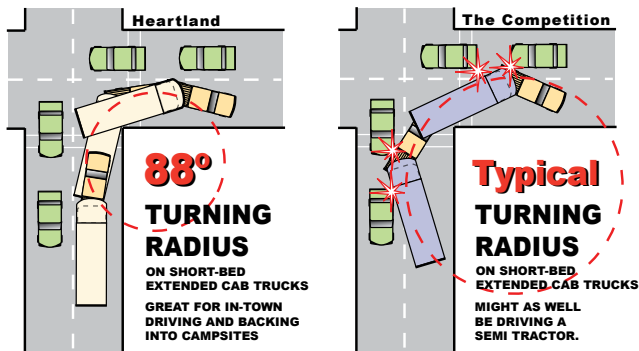


NORTH TRAIL 5th Wheels feature Heartland's famous Universal Docking Center (UDC) where many of the unit's hook-ups are concealed in one easy to access compartment!



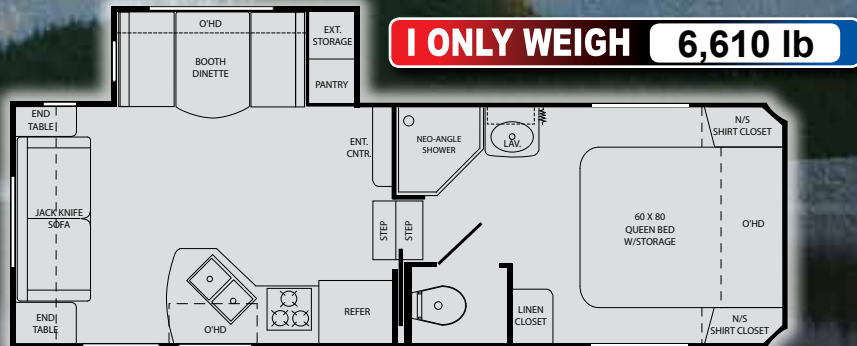
You'll be impressed with the NORTH TRAIL 5th wheel's enormous pass-through exterior storage compartment - with room for all your travel storage needs!

ACHIEVE AN 88° TURN! IN A SHORT-BED, EXTENDED CAB TRUCK ONLY IN A HEARTLAND!



PATENT PENDING!
DON'T ACCEPT ANY IMITATIONS - IF YOU CAN'T TURN 88° IT'S NOT A HEARTLAND!

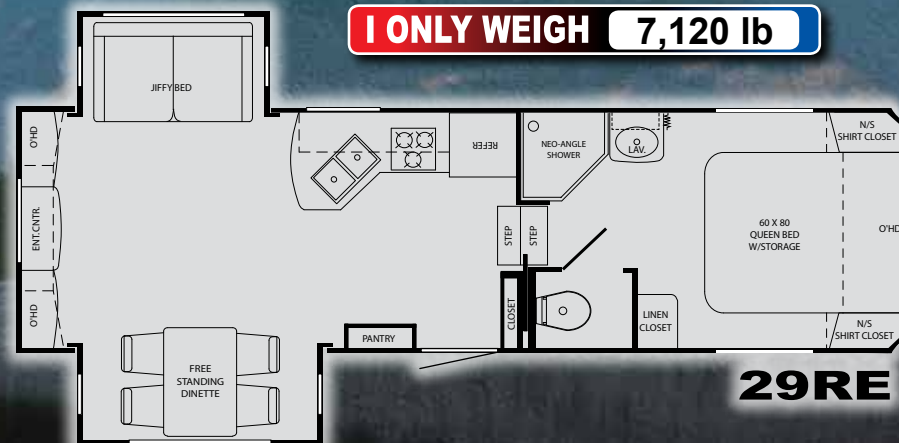
FIFTH WHEELS.



I ONLY WEIGH 6,610 lb

GVWR: 11,295 lb. Dry: 6,610 lb. Hitch: 1,135 lb.
Length: 26'-4" Height: 11'-10"

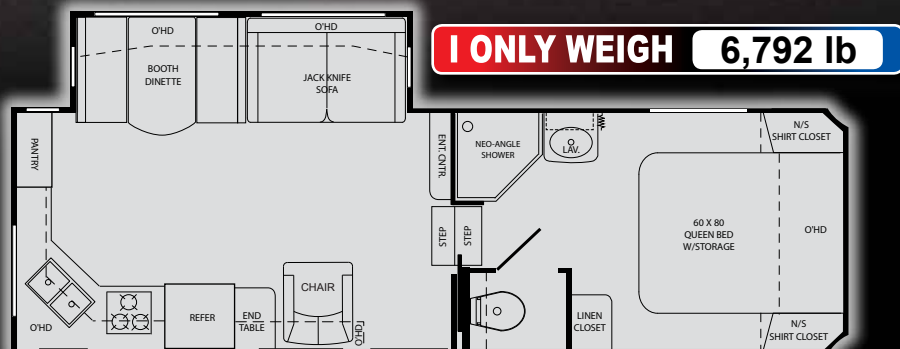
24RL



I ONLY WEIGH 7,120 lb

GVWR: 11,360 lb. Dry: 7,120 lb. Hitch: 1,200 lb.
Length: 30'-5" Height: 11'-10"

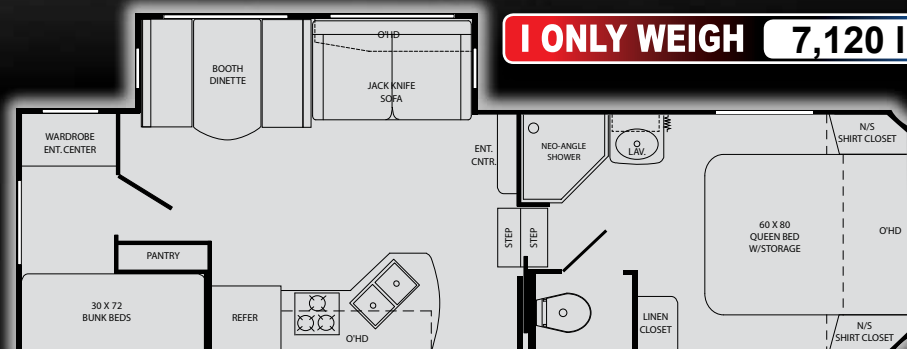
29RE



I ONLY WEIGH 6,792 lb

GVWR: 11,430 lb. Dry: 6,792 lb. Hitch: 1,270 lb.
Length: 28'-5" Height: 11'-10"

26RK



I ONLY WEIGH 7,120 lb

GVWR: 11,580 lb. Dry: 7,120 lb. Hitch: 1,420 lb.
Length: 30'-5" Height: 11'-10"

28BH

INTERIOR

- Radius Counter Tops
- Smoke Detector
- LP Detector
- Fire Extinguisher
- 8 ft. Wide-Body Design
- 78" Interior Height (T.T.)
- Monitor Panel in Bathroom
- Cable TV Prep
- Dual Ducted 13.5 A/C
- 12V, AM/FM CD Player
- Raised Panel Overhead Cabinets Doors
- TV Antenna w/Booster

KITCHEN

- Steel Ball-Bearing Drawer Guides -Full Extension
- Hi-Rise Kitchen Faucet
- Half-Time Convection Oven (Below counter)
- 9,000 BTU 3-Burner Cooktop (All 3 Burners High Output!)
- Residential Quality Linoleum Flooring
- Power Range Hood w/Light
- Double Door Refer
- Radiused Kitchen Counter Tops
- Acrylic Sink with Cover (5th Only - Cover)

BATH AREA

- Shower Skylight
- Tub Surround with Built-in Shelves
- Hardwood Medicine Cabinet
- Bathroom Power Vent w/Wall Switch
- Foot Flush Toilet

BEDROOM

- 74" Queen Bed, Foam - (80" in 5th)
- Pullout Drawers in Bedbase (most models)
- Bedroom Night Stands
- Reading Lights
- 120V Outlets on Both Night Stands

EXTERIOR

- 1-Piece ABS Heated & Enclosed Underbelly
- E-Z Lube Hubs
- 4 Stab Jacks T.T. (2 on 5th)
- 14" Tires T.T. (15" on 5th)
- Outside Speakers
- Outside Shower
- Patio Awning
- Spare Tire (T.T. Std - 5th Opt)
- Exterior 120V Outlet
- Large Assist Entry Handle
- One Piece Rubber Roofing Material

FEATURES

- Diamond Plate Front Rock Guard (T.T.)
- 25,000 BTU Furnace (35,000 BTU on King Slide Models)
- The FIRST UDC (Universal Docking Center) in a Lightweight, Mid-Pro 5th Wheel (5th only)
- 6 DSI Gas/Electric Water Heater (T.T.)
- Fresh Water 36 Gal (T.T.) 47 Gal (5th)
- Gray/Black 37 Gal (T.T.) 40 Gal (5th)
- Electric Slide Outs
- Black Tank Flush System
- Texas Style Storage Doors
- XLT KITCHEN PACKAGE:
 - Upgraded Oil Rubbed Bronze Hardware
 - Upgraded Decorative Glass Inserts
 - Removable Dinette Table (inside/outside) (most models)
 - Large Viewing Window in Kitchen (T.T.)
 - Full Extension Ball Bearing Drawer Guides
 - Deep Pantry with Removable Shelves (most models)

OPTIONS

- Power Awning
- RVQ Grill (T.T. Only)
- 15K A/C
- Aluminum Wheels
- 15" LCD TV w/ DVD Player (TT)
- 32" LCD TV (5th only)
- Fiberglass Front Cap (5th)
- Hitch Cover (5th)
- 78" Pillow-Top Mattress
- ToyLok

* Lightweight Strength Package:

- Laminated Crowned Roof System
- Block Foam Brick Insulation
- Aluminum Construction (front, back and side walls, floor, roof)
- Enclosed and Heated Underbelly
- Radius Double Entry Step
- Tinted Safety Glass Windows
- 2" Thick (R-7) Sidewall Construction
- 4 Stabilizer Jacks with Sand Pads (T.T.)
- WIDE-TRAX Axle Placement (T.T.)
- HD Leaf Spring Suspension
- Dual 20 lb. LP Tanks (T.T.)
- Dual 30 lb. LP Tanks (5th)




www.HEARTLANDRVs.com

Experience:

Product Walk-Through Videos
Side By Side Comparisons
Feature Videos • Photo Galleries
Virtual 360° Tours
Detailed Floor Plans
News • Testimonials
Customer Service
Service Locator
Owners Club • More
at our Informative Web Site



 CALL DIRECT FOR DIRECT RESULTS!	
TOLL FREE & WARRANTY PHONE NUMBERS:	
VENDOR 800# <small>Call direct for the best possible price. We are not affiliated with the warranty phone numbers of our most common vendor partners as you may wish directly with them to more quickly handle service issues. Check the listed name on the product to determine the correct vendor.</small>	1-866-524-7821
LIPEX <small>Lightweight, Mid-Pro, Slide-Out Systems</small>	1-800-544-4881
DOMETIC <small>Refrigerators, Air Conditioners, Awnings, Convection Ovens</small>	1-800-347-2232
NORCO <small>Refrigerators, Air Conditioners</small>	1-800-854-3218
SHUR-LOW <small>Refrigerators, Air Conditioners</small>	1-800-543-1219
THETFORD <small>Refrigerators, Air Conditioners</small>	1-800-250-7051
KIB <small>Refrigerators, Air Conditioners</small>	1-800-537-2925
TRETT TIRE <small>Refrigerators, Air Conditioners</small>	1-800-688-3135
A.S.A. <small>Refrigerators, Air Conditioners</small>	1-269-781-4241
PROGRESSIVE <small>Refrigerators, Air Conditioners</small>	1-877-294-8997
CHENG <small>Refrigerators, Air Conditioners</small>	1-866-869-3118
ATWOOD <small>Refrigerators, Air Conditioners</small>	1-423-775-2131
SUBURBAN <small>Refrigerators, Air Conditioners</small>	1-800-228-7926
SWAN <small>Refrigerators, Air Conditioners</small>	1-874-259-7838

Call Direct, Fast Results! 800# LABEL IN EVERY HEARTLAND

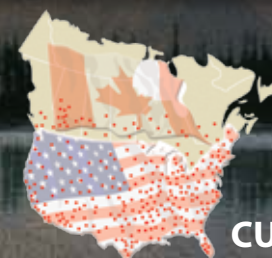
We provide a convenient sticker in each coach listing the warranty phone numbers of our most common vendor partners so that if you choose to, you may work directly with them to more quickly resolve issues or obtain replacement items.



Product information is as accurate as possible as of the date of publication of this brochure. Due to Heartland's commitment to continuous product improvement - floorplans, materials, components, features, specifications, options, etc. are subject to change without notice or obligation to Heartland Recreational Vehicles. North Trail specifications apply to coaches beginning with serial number 203889.

Tow Vehicle Caution: Owners of Heartland recreational vehicles are solely responsible for the selection and proper use of tow vehicles. All customers should consult with a motor vehicle manufacturer or their dealer concerning the purchase and use of suitable tow vehicles for Heartland products. Heartland disclaims any liability or damages suffered as a result of the selection, operation, use or misuse of a tow vehicle. Heartland's limited warranty does not cover damage to the recreational vehicle or the tow vehicle as a result of the selection of the tow vehicle. See your nearest Heartland dealer to review a current model.

33M LITHO 5/09 Revision B



HEARTLAND CUSTOMER SERVICE WE'VE GOT YOUR BACK!

Over 40 men and women located in a dedicated facility servicing our customers every day. With a dealer network of over 400 locations across the U.S. and Canada, you're never far from an authorized Heartland dealer.

Heartland Recreational Vehicles
1001 All-Pro Drive
Elkhart, IN 46514
574-262-5992

Your Authorized Heartland Dealer: