



# SUNDANCE

BY HEARTLAND



*THE NEXT GENERATION OF  
MID-PROFILE FIFTH WHEELS &  
ULTRA LIGHTWEIGHT TOWABLES*







### **AFFORDABLE LUXURY**

The all-new SUNDANCE by Heartland Recreational Vehicles is without doubt the most value-packed mid-profile fifth wheel on the market today. With exciting new features such as solid surface counter tops, oil-rubbed bronze hardware, elegant high-backed dinette chairs, air-mattress hide-a-bed sofas, plush recliners and solid hardwood cabinetry with steel ball-bearing drawer guides - the SUNDANCE simply offers more for the money! Choose from a variety of multiple slide-out floorplans, including six different triple-slides offering the ultimate in interior spaciousness. Another great SUNDANCE feature is the location of our main air conditioning unit. By placing the A/C at the rear of the unit, not only does it lower the overall height of the coach, but tests show that the energy and cooling efficiency of the unit is increased up to 20% by only having to blow air a single direction (forward) versus two ways.

### **HIDDEN VALUE**

There are numerous hidden values located throughout the all-new SUNDANCE, including the convenient extra storage found in the bases of each dinette seat - a great place to store valuables or games.



### **TRUE SOLID SURFACE COUNTER TOP OPTION**

Don't settle for lesser quality laminated counter tops or thin fiberglass covered particle-board.

SUNDANCE's solid-surface counter top option features consistency throughout which can be easily repaired in case of scratches.







**STEEL  
BALL BEARING  
DRAWER GUIDES**  
When it comes to smart designs - the SUNDANCE leads the way with convenient and helpful concepts like our full-extension steel ball bearing drawer guides. The extra strong drawer guides allow us to offer

larger drawers which extend past the cabinet face for maximum usage.



#### **HARDWOOD CABINET DOORS & DRAWERS**

Be sure to check when shopping whether other brands have the typical, thin hardwood veneers over chipboard - or real Amish-crafted hardwood doors like SUNDANCE.



#### **OPTIONAL 50-AMP SERVICE FOR DUAL A/Cs**

This detachable, 50-Amp electrical power cord is rarely available on a coach in this price point. More and more campers are staying for longer periods of time and the SUNDANCE offers both the spaciousness and amenities for even the most discriminating buyers. The diamond-plated steel bumper provides a great place for bike racks while protecting the coach when maneuvering.





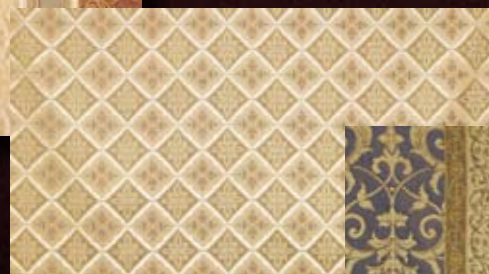


### ***SPACIOUS INTERIORS***

You'll appreciate the open, spacious floorplans designs in each of the twelve different SUNDANCE fifth wheels - accentuated by large electric slide-out rooms, elegant ceiling fans and warm hardwood cabinetry with solid-surface counter tops, elegant slide fascia designs, hard sided window valances, day/night shades and loads of base cabinet and overhead storage.



**MERLOT**



**BEIGE**



**MAJESTIC BLUE**

### ***LUXURIOUS DECORS***

Choose from three elegant decors featuring durable fabrics on the furnishings and window coverings.







## MORE STORAGE!

You'll love the way SUNDANCE maximizes storage opportunities by smart engineering and utilizing each and every square inch of the coach to provide our customers with more room for their belongings!



### UNIVERSAL DOCKING CENTER

The FIRST of its kind in a mid-profile fifth wheel! The SUNDANCE UDC offers all of the unit systems hook-ups, including tank pull handles, in a single, concealed exterior compartment! Normally reserved for coaches costing tens of thousands more - SUNDANCE brings this feature to a price point where customers will really appreciate its everyday value. Because the underbelly of the SUNDANCE is both enclosed and heated, the gate valves are protected against the elements.



### MORE GREAT FEATURES...

SUNDANCE customers can enjoy listening to their favorite CD or radio station outside the coach through the **EXTERIOR SPEAKERS**. True fifth wheel enthusiasts love the optional **16" TIRES** with aluminum rims - providing better towing. The optional **HITCH COVER** provides not only a great look - but improved aerodynamics.







### ***ROOMY SLIDE-OUT BEDROOMS***

Each SUNDANCE mid-profile fifth wheel features a roomy queen bed slide-out for maximum comfort and spaciousness. Like fifth wheels costing thousands more, the SUNDANCE features two windows in the slide room for maximum ventilation, a full-width wardrobe with built-in storage shelves, a deep six-drawer dresser and a built-in TV cabinet with antenna and cable hook-ups.



### ***LARGE, USABLE BATHROOM SPACE***

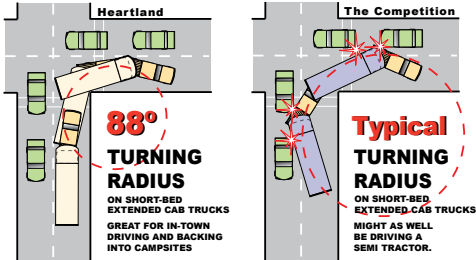
You'll appreciate the large neo-angle fiberglass shower found in the SUNDANCE, along with the large linen storage, mirrored medicine cabinet, roomy commode room featuring a power vent and built-in storage for toiletries.





# SUPERIOR CONSTRUCTION AND DESIGN TRANSLATE INTO A SUPERIOR VALUE!

## ACHIEVE AN 88° TURN! IN A SHORT-BED, EXTENDED CAB TRUCK ONLY IN A HEARTLAND!



## PATENTED!!

DON'T ACCEPT ANY IMITATIONS - IF YOU CAN'T TURN 88° IT'S NOT A HEARTLAND!

*Perfect for Short-Bed,  
Extended-Cab Trucks*



**Lightweight  
ALUMINUM**

## 2" THICK SIDEWALLS!



Just an 1/8" thick foam cup protects your hand from scalding hot coffee... imagine what nearly 2" of block foam does for your Laminated Heartland Sidewall!

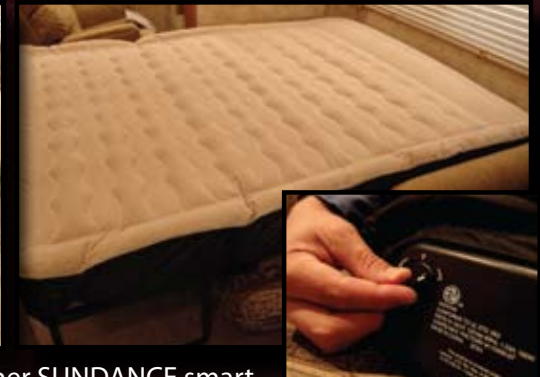
Double Welded, Fully Laminated  
Sidewall Construction

## ZERO° TESTED!

Heartland 5th wheel Construction has been subjected to rigid testing in the famous DOMETIC™ extreme temperature testing chamber where it passed with flying colors! The chamber is set to 0° to test the unit's heating efficiency, followed by being set at 100° to test its cooling efficiency. With our thick 2" laminated walls; enclosed and heated underbelly; and insulated floor - the interior of the Heartland coach remained warm and comfy during the sub-freezing test and nice and cool during the heat test!

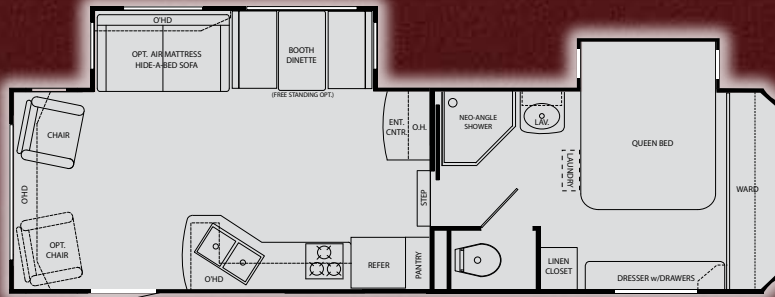


For more details, visit our web site:  
[www.HEARTLANDRVs.com](http://www.HEARTLANDRVs.com)



Yet another SUNDANCE smart design - the optional air-mattress hide-a-bed sofa offers the ultimate in comfort, as well as a deep drawer that is perfect for storing throw blankets and other items.

# MID-PROFILE SUNDANCE MODELS ARE DESIGNED TO MEASURE

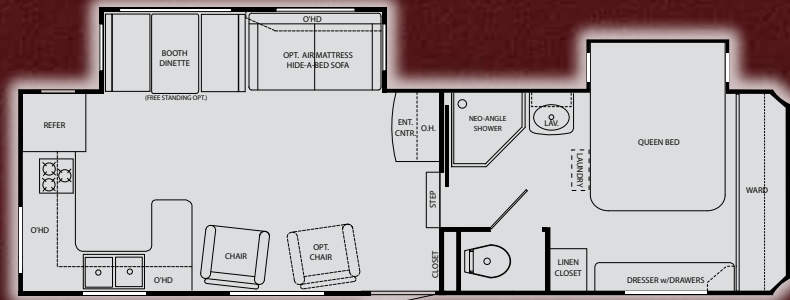


GVWR: 11,380 lb.  
Dry: 7,975 lb.  
Hitch: 1,875 lb.

Length: 30'-10"  
Height: 11'-10"  
12'-0" w/16" Wheels Opt.

Fresh: 57 gal.  
Gray: 80 gal.  
Black: 40 gal.

**2800RLS**



GVWR: 11,875 lb.  
Dry: 8,733 lb.  
Hitch: 1,715 lb.

Length: 31'-8"  
Height: 11'-10"  
12'-0" w/16" Wheels Opt.

Fresh: 57 gal.  
Gray: 80 gal.  
Black: 40 gal.

**2900RK**

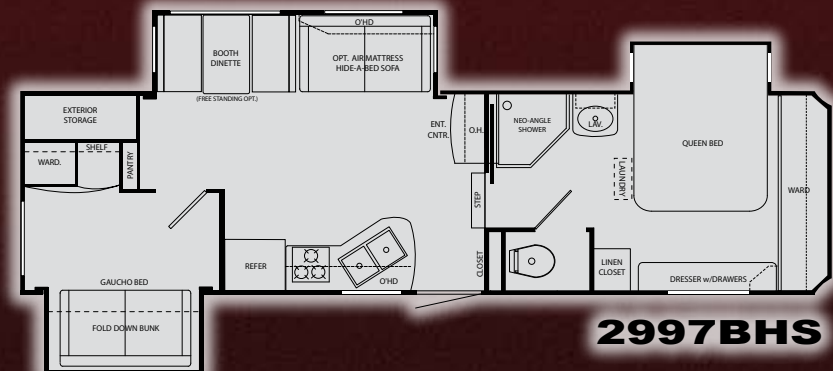


GVWR: 12,034 lb.  
Dry: 8,741 lb.  
Hitch: 1,874 lb.

Length: 31'-8"  
Height: 11'-10"  
12'-0" w/16" Wheels Opt.

Fresh: 57 gal.  
Gray: 80 gal.  
Black: 40 gal.

**2900MK**

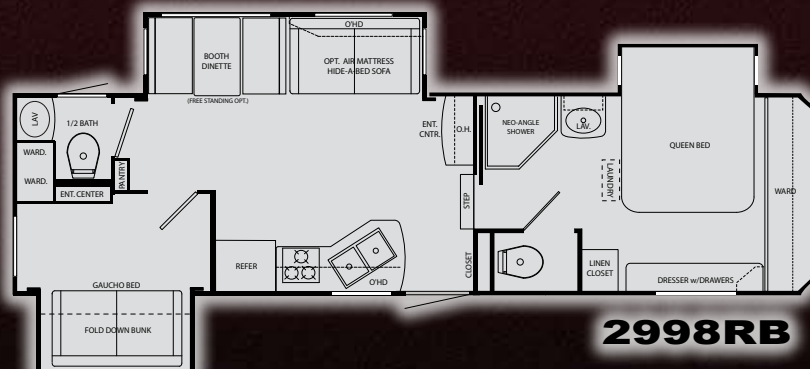


GVWR: 11,870 lb.  
Dry: 9,405 lb.  
Hitch: 1,675 lb.

Length: 33'-8"  
Height: 11'-10"  
12'-0" w/16" Wheels Opt.

Fresh: 57 gal.  
Gray: 80 gal.  
Black: 40 gal.

**2997BHS**



GVWR: 11,870 lb.  
Dry: 9,515 lb.  
Hitch: 1,699 lb.

Length: 33'-8"  
Height: 11'-10"  
12'-0" w/16" Wheels Opt.

Fresh: 57 gal.  
Gray: 80 gal.  
Black: 80 gal.

**2998RB**



GVWR: 11,900 lb.  
Dry: 9,138 lb.  
Hitch: 1,740 lb.

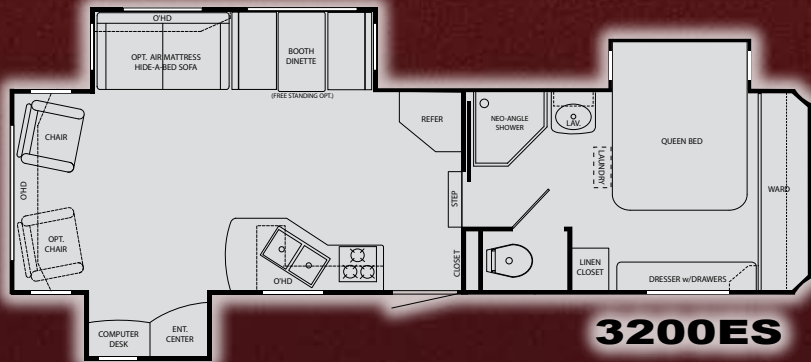
Length: 32'-10"  
Height: 11'-10"  
12'-0" w/16" Wheels Opt.

Fresh: 57 gal.  
Gray: 80 gal.  
Black: 40 gal.

**3012RE**



# 12' OR LESS TO EASILY FIT IN MOST STORAGE FACILITIES

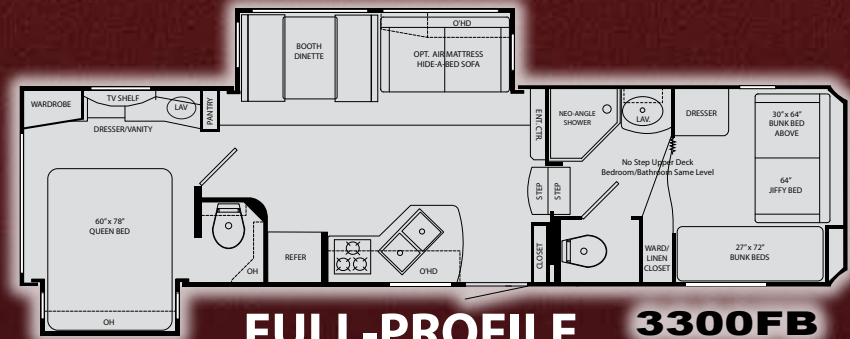


**3200ES**

GVWR: 12,001 lb.  
Dry: 9,706 lb.  
Hitch: 1,841 lb.

Length: 34'-1"  
Height: 11'-10"  
12'-0" w/16" Wheels Opt.

Fresh: 57 gal.  
Gray: 80 gal.  
Black: 40 gal.

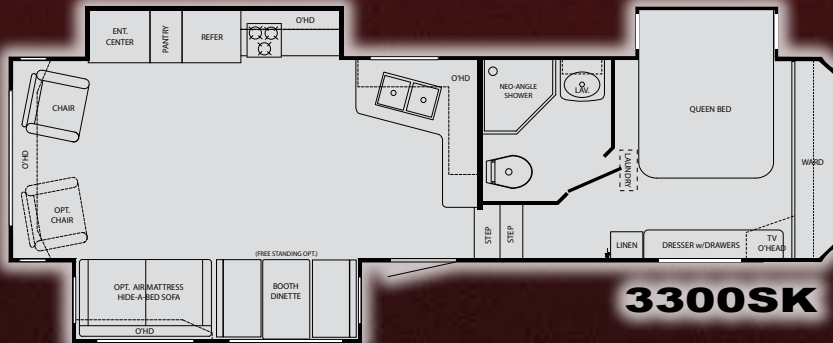


**FULL-PROFILE 3300FB**

GVWR: 11,972 lb.  
Dry: 9,520 lb.  
Hitch: 1,812 lb.

Length: 35'-1"  
Height: 12'-4"

Fresh: 57 gal.  
Gray: 80 gal.  
Black: 80 gal.

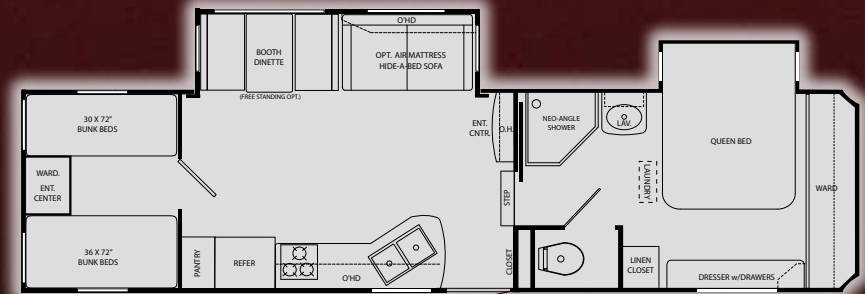


**3300SK**

GVWR: 11,990 lb.  
Dry: 9,473 lb.  
Hitch: 2,007 lb.

Length: 34'-1"  
Height: 11'-10"  
12'-0" w/16" Wheels Opt.

Fresh: 57 gal.  
Gray: 80 gal.  
Black: 40 gal.

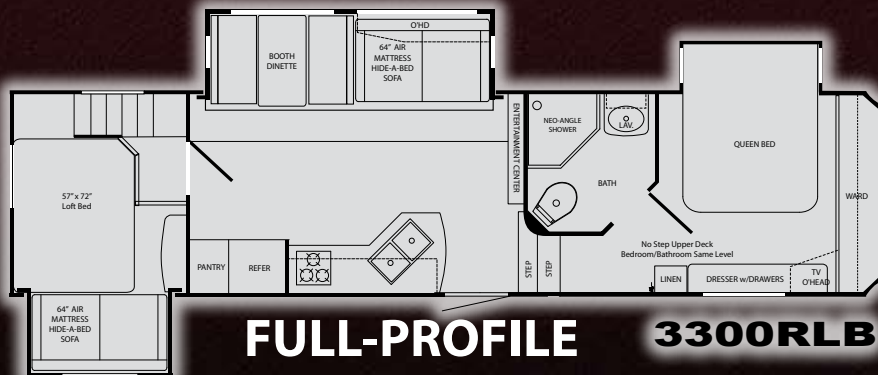


**3300BHS**

GVWR: 11,762 lb.  
Dry: 8,913 lb.  
Hitch: 1,602 lb.

Length: 34'-8"  
Height: 11'-10"  
12'-0" w/16" Wheels Opt.

Fresh: 57 gal.  
Gray: 80 gal.  
Black: 40 gal.

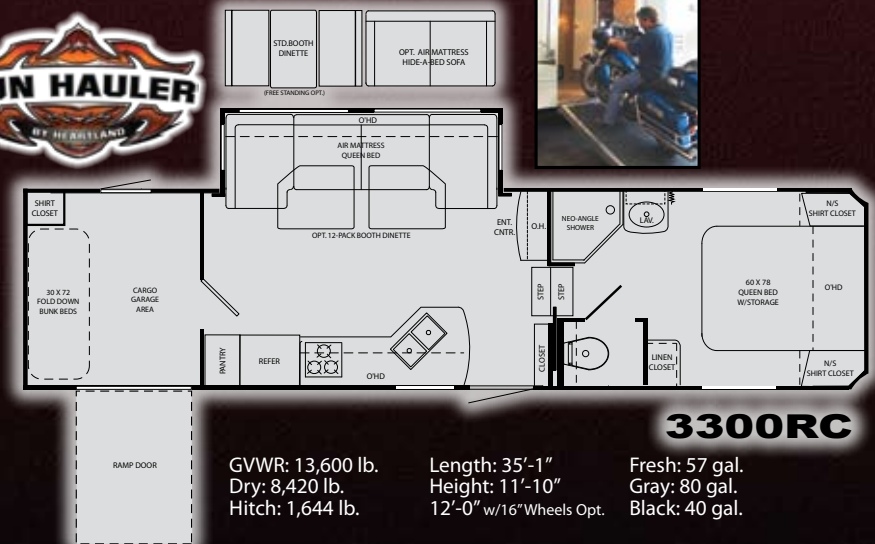


**FULL-PROFILE 3300RLB**

GVWR: 13,600 lb.  
Dry: 9,663 lb.  
Hitch: 1,873 lb.

Length: 35'-9"  
Height: 12'-7"

Fresh: 57 gal.  
Gray: 80 gal.  
Black: 40 gal.



**3300RC**

GVWR: 13,600 lb.  
Dry: 8,420 lb.  
Hitch: 1,644 lb.

Length: 35'-1"  
Height: 11'-10"  
12'-0" w/16" Wheels Opt.

Fresh: 57 gal.  
Gray: 80 gal.  
Black: 40 gal.





# MID-PROFILE FIFTH WHEELS



## STANDARD FEATURES

### EXTERIOR

- Universal Docking Center - Hook-Ups Concealed in One Easy-to-Access Compartment
- E-Z Lube Hubs
- Rain Gutters w/Downspouts
- Unbeatable Pass-Through Storage
- Chrome Rear Ladder
- Diamond-Plated Accent Bumper
- Front Jacks w/Quick Release Pins
- Flush Floor Electric Slides
- Electric Outlet for Awning Lights
- Exterior Stereo Speakers
- Cable TV Jack - Doorside
- 1-Piece ABS Underbelly
- Astro-Foil Insulation in Underbelly
- Astro-Foil Insulation on Bath/Bed Deck
- 1-Piece Rubber Roofing Material
- Amber Porch Light
- Sewer Hose Storage in Bumper
- Large Assist Entry Handle
- Dual 30 lb. LP Tanks
- 10" I-Beam Frame
- Entry Step Light w/Switch
- 30" Radius Entry Door w/Dead Bolt at Main Entry
- Water Heater Bypass
- 30 Amp Electrical Service
- Security Light
- Enclosed and Heated Holding Tanks and Valves
- Aerodynamic Fiberglass Front Cap
- High-End Graphics Package
- Patio Awning
- Triple Entry Step
- Break Away Switch
- Electric Powered Front Jacks (5W)
- Overall Height Under 12'

## STANDARD FEATURES

### KITCHEN

- Large Stainless Steel Kitchen Sink
- Full Extension Ball-Bearing Drawer Guides
- Drawer in Pantry
- Hi-Rise Kitchen Faucet w/Sprayer
- Residential Quality Linoleum
- Power Range Hood w/Light

### BATH

- Neo-Angle Shower
- Medicine Cab. w/Mirror & Lights
- Porcelain Toilet

### BEDROOM

- Laundry chute
- Deluxe Innerspring Mattress
- Lift-Up, Finished Bed Storage
- Shoe Rack in Closet Bedroom Slide Models
- TV Cabinet in Bedroom
- Second A/C Prep

### LIVING AREA

- Multiple Electrical Outlets in Living Area
- Enclosed Control Panel at Entry
- 10 gal. W/H Gas/Electric DSI
- Residential Style Light Switches
- High-End Residential Rockers
- High-End Window Valances
- Plush Carpet with Padding
- Jackknife Sofa
- Coat Closet
- Flush Floor Slide-Outs
- Smoke Detector
- Carbon Monoxide Detector
- Slide Windows in Both Ends of Slide Outs
- Adjustable A/C Vents for Improved Air Flow

## POPULAR FEATURES:

- PATENTED Turning Radius – achieve a 88° turn on a short bed truck!
- Black Tank Flush System
- 12V AM/FM/CD Player
- 60 x 80 Queen Bed
- Day/Night Shades
- Snap Jack Pins for Landing Gear
- Universal Docking Center
- Porcelain Toilet
- 35,000 BTU Furnace
- Dark Tinted Safety Glass Windows
- Storage in the Dinette Chairs

## OPTIONS:

- Solid Surface Countertops
- Air Mattress Sofa-Bed w/Drawer
- 50 Amp Service
- Hitch Cover (5th Wheel only)
- Spare Tire
- Ceiling Fan
- Out side Shower
- 16" Aluminum Wheels w/6,000# axles
- 27" LCD TV (where available)
- Electric Rear Jacks
- Fireplace (where available)
- High-Back, Padded Free Standing Dinette Chairs and Table
- Leather Euro Recliners with ottoman
- 8 Cu. Ft. Refrigerator
- Shock Absorbers
- 2nd Rocker Chair (1 STD.)
- Electric Power Awning
- 15,000 BTU A/C



# XLT

## ULTRA - LITE

### **THE PERFECT CHOICE FOR 1/2 TON TRUCK OWNERS!**

The SUNDANCE XLT ultra lightweight line of towables is quite possibly the strongest built lightweight series ever to hit the market! Featuring all-aluminum, fully laminated construction - including a laminated roof - the SUNDANCE XLT is built to stand the test of time. The XLT also features Heartlands's Patented Improved Turning Radius that allows you to turn up to 88-degrees in most short bed, extended cab trucks!



### **BEAUTIFUL INTERIORS!**

The SUNDANCE XLT features luxurious furnishings, Amish-crafted hardwood doors and drawers, oil-rubbed bronze hardware, decorative glass inserts in the overheads and multiple slide-out floorplans. The combination range/oven offers three high-output burners on top with a convection microwave oven below which allows for increased storage space above! The bath area of the XLT features a nice-sized lav base, mirrored medicine cabinet and large neo-angle shower with skylight.

### **A PERFECT MIX OF FUNCTION AND LIVABILITY**

Enjoy the comfort of this over-sized dinette while playing games or watching television. Notice the abundance of hardwood cabinet storage - great for all your travel needs.





# LIGHT IN WEIGHT, TONS OF BENEFITS

## A TRUE TEST!



**OVER 3,700 Pounds!**

Plant Manager Steve Johnson was so confident in the superior design and strength of the SUNDANCE XLT roof construction that he offered to have his personal truck lifted up and set on the coach to test it! There is no "photoshop" work on these photos - the truck was set on the roof of the coach with no extra support and it passed the test with flying colors!

*NOTE: Heartland does not recommend, nor condone the setting of automobiles or trucks on the roofs of our recreational vehicles. This test was performed solely for advertising purposes to show the incredible strength of our laminated roof.*



The CROWNED LAMINATED ROOF is unique in the ultra lightweight towable marketplace - promoting snow, water and debris run-off!



LARGER PASS THROUGH STORAGE allows SUNDANCE XLT owners to store larger items such as this full-size cooler!



The ALL ALUMINUM CONSTRUCTION translates into both a lighter weight unit and stronger, unified construction versus the traditional wood-constructed coaches!



LAMINATED Floor System Featuring sturdy Aluminum Framing; thick Block Foam Insulation; and One-Piece Seamless Decking. All of this is Laminated together for Maximum Strength and Insulation R Value - virtually eliminating flex in the floor!



**UNIVERSAL DOCKING CENTER**  
The SUNDANCE UDC brings all of the unit systems hook-ups, including tank pull handles, to a single, concealed exterior compartment!

**INCREDIBLE TOWING AND BALANCE!**







# FIFTH WHEEL FLOORPLANS

## MOST ARE ½ TON TOWABLE!



Free-standing dinette table  
can be brought outdoors  
when desired

**6,299 lb**

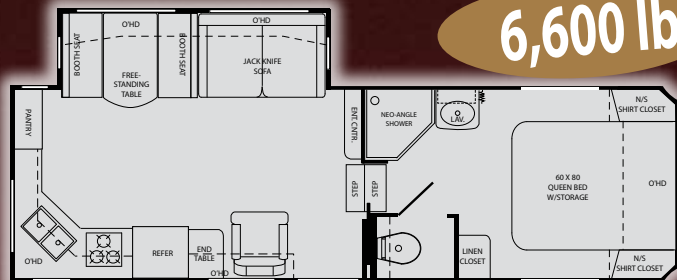


**245RL**

GVWR: 11,285 lb.  
Dry: 6,580 lb.  
Hitch: 1,129 lb.

Length: 26'-4"  
Width: 8'-0"  
Height: 11'-10"

Fresh: 53 gal.  
Gray: 40 gal.  
Black: 40 gal.



**265RK**

**6,600 lb**

GVWR: 11,430 lb.  
Dry: 6,792 lb.  
Hitch: 1,270 lb.

Length: 28'-5"  
Width: 8'-0"  
Height: 11'-10"

Fresh: 53 gal.  
Gray: 80 gal.  
Black: 40 gal.



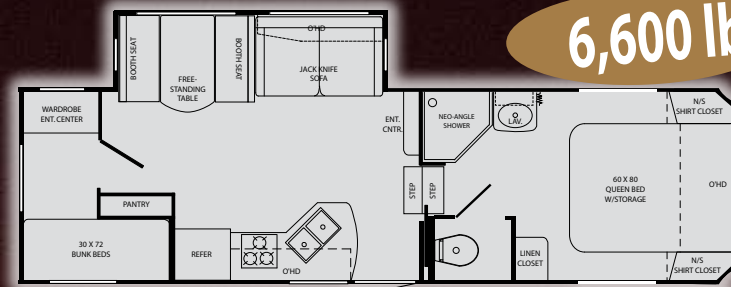
**305 ES**

**NEW**

GVWR: 11,500 lb.  
Dry: TBD  
Hitch: TBD

Length: 32'-3"  
Width: 8'-0"  
Height: 11'-10"

Fresh: 53 gal.  
Gray: 80 gal.  
Black: 40 gal.



**285BH**

**6,600 lb**

GVWR: 11,560 lb.  
Dry: 7,050 lb.  
Hitch: 1,406 lb.

Length: 30'-5"  
Width: 8'-0"  
Height: 11'-10"

Fresh: 53 gal.  
Gray: 80 gal.  
Black: 40 gal.



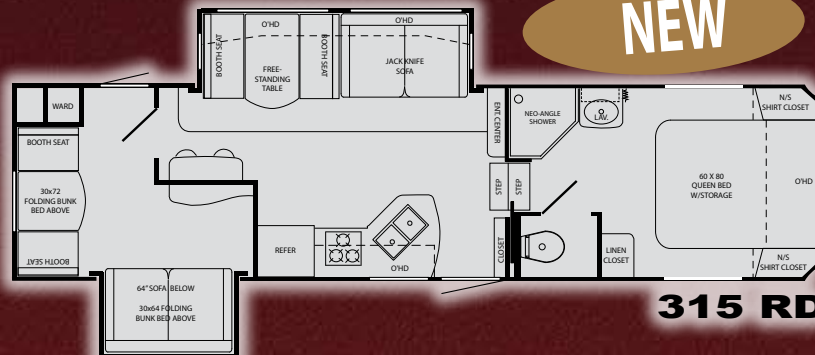
**287RL**

**6,500 lb**

GVWR: 11,560 lb.  
Dry: 7,010 lb.  
Hitch: 1,406 lb.

Length: 30'-5"  
Width: 8'-0"  
Height: 11'-10"

Fresh: 53 gal.  
Gray: 80 gal.  
Black: 40 gal.



**315 RD**

**NEW**

GVWR: 11,500 lb.  
Dry: TBD  
Hitch: TBD

Length: 34'-0"  
Width: 8'-0"  
Height: 11'-10"

Fresh: 53 gal.  
Gray: 80 gal.  
Black: 40 gal.





# TRAVEL TRAILER FLOORPLANS

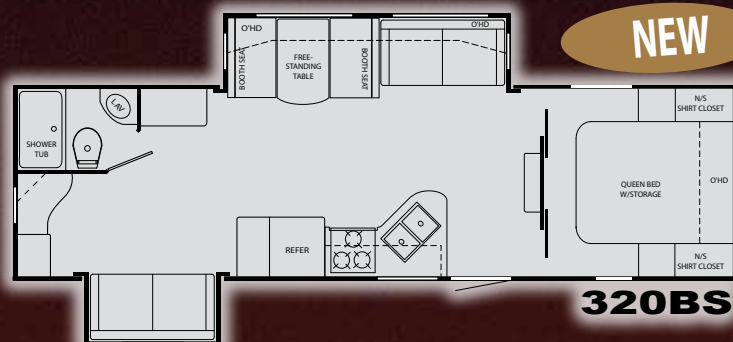
The SUNDANCE XLT Travel Trailer is one of the Strongest Light Weights on the Market!

## ULTRA LIGHT SLIDES

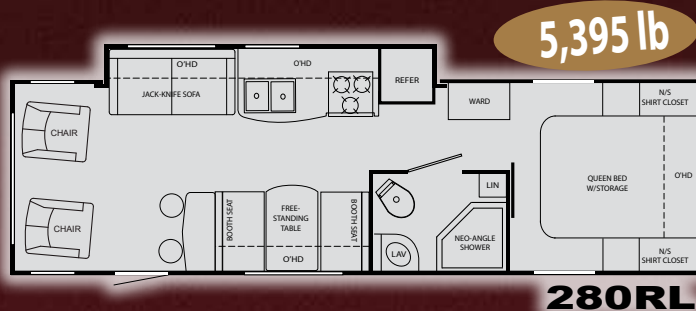


GVWR: 6,900 lb.  
Dry: 5,260 lb.  
Hitch: 620 lb.  
Length: 30'-3"  
Width: 8'-0"  
Height: 9'-10"  
Fresh: 42 gal.  
Gray: 37 gal.  
Black: 37 gal.

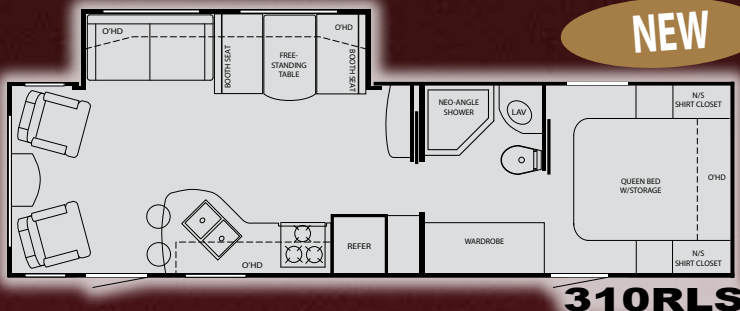
## FULL-DEPTH SLIDES



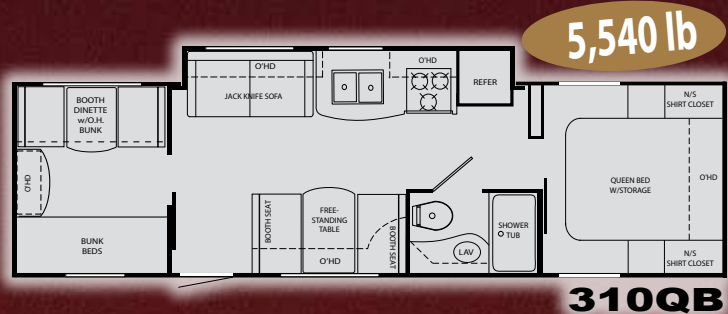
GVWR: 8,600 lb.  
Dry: TBD  
Hitch: TBD  
Length: 33'-11"  
Width: 8'-0"  
Height: 10'-10"  
Fresh: 42 gal.  
Gray: 37 gal.  
Black: 37 gal.



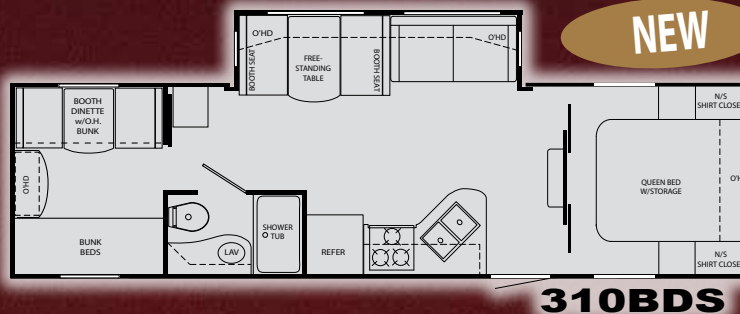
GVWR: 6,900 lb.  
Dry: 5,395 lb.  
Hitch: 690 lb.  
Length: 32'-0"  
Width: 8'-0"  
Height: 9'-10"  
Fresh: 42 gal.  
Gray: 37 gal.  
Black: 37 gal.



GVWR: 8,600 lb.  
Dry: TBD  
Hitch: TBD  
Length: 33'-11"  
Width: 8'-0"  
Height: 10'-10"  
Fresh: 42 gal.  
Gray: 37 gal.  
Black: 37 gal.



GVWR: 6,900 lb.  
Dry: 5,540 lb.  
Hitch: 675 lb.  
Length: 33'-5"  
Width: 8'-0"  
Height: 9'-10"  
Fresh: 42 gal.  
Gray: 37 gal.  
Black: 37 gal.



GVWR: 8,600 lb.  
Dry: TBD  
Hitch: TBD  
Length: 34'-11"  
Width: 8'-0"  
Height: 10'-10"  
Fresh: 42 gal.  
Gray: 37 gal.  
Black: 37 gal.





## ULTRA LIGHT WEIGHT TRAVEL TRAILERS & FIFTH WHEELS



### INTERIOR

Radius Counter Tops  
Smoke Detector  
LP Detector  
Fire Extinguisher  
**8 ft. Wide-Body Design**  
78" Interior Height  
Monitor Panel  
Cable TV  
Ducted 13.5 A/C  
12V, AM/FM CD Player  
**Raised Panel Overhead Cabinets Doors**  
TV Antenna w/Booster

### KITCHEN

**Steel Ball-Bearing Drawer Guides -Full Extension**  
Hi-Rise Kitchen Faucet  
Convection Oven (below countertop for extra storage)  
**9,000 BTU 3-Burner Cooktop**  
**(All 3 Burners High Output!)**  
Residential Quality Linoleum Flooring  
Power Range Hood w/Light  
Double Door Refer  
Radiused Kitchen Counter Tops  
**Acrylic Sink with Cover**

### BATH AREA

Shower Skylight  
**Tub Surround with Built-in Shelves**  
Hardwood Medicine Cabinet  
Power Vent in Bathroom  
**Porcelain Foot Flush Toilet** (5th Wheels)

### BEDROOM

**78" Queen Bed**  
**Pullout Drawer in Bedbase** (most models)  
Bedroom Night Stands (travel trailers)  
Reading Lights  
120V Outlets on Both Night Stands (travel trailers)

### EXTERIOR

**1-Piece ABS Underbelly**  
E-Z Lube Hubs  
4 Stab Jacks (2 on 5th Wheels)  
14" Tires (15" on 5th Wheels)  
Outside Speakers  
Outside Shower  
Patio Awning  
Spare Tire (option on 5th Wheels)  
Exterior 120V Outlet  
Large Assist Entry Handle  
One Piece Rubber Roofing Material

### FEATURES

25,000 BTU Furnace  
**The FIRST UDC (Universal Docking Center) in a Lightweight, Mid-Pro 5th Wheel!** (5th wheels only)  
6 Gal DSI Water Heater  
**Enclosed Underbelly**  
Electric Slide Outs  
**Black Tank Flush System**  
Texas Style Storage Doors  
**XLT KITCHEN PACKAGE:**  
- Upgraded Oil Rubbed Bronze Hardware  
- Upgraded Decorative Glass Inserts  
- Removable Dinette Table (inside/outside)  
- Large Viewing Window in Kitchen (trailers)  
- Full Extension Ball Bearing Drawer Guides  
- Deep Pantry with Removable Shelves

### OPTIONS

Fiberglass Front Cap (5th Wheels)  
Hitch Cover (5th Wheels)  
RVQ Grill (Travel Trailers)  
Aluminum Wheels  
15K A/C  
19" LCD TV  
Two Chairs IPO Sofa (some models)  
Freestanding Dinette Table & Chairs (5th Wheels Only)  
Spare Tire (5th Wheels)  
Hide-A-Bed Air Mattress (5th Wheels)

### \* LITE-WEIGHT STRENGTH PKG. (includes):

**Strong Laminated Crowned Roof**  
**Block Foam Brick Insulation**  
**Aluminum Construction**  
(front, back and side walls, floor, roof)  
**Enclosed and Heated Underbelly**  
Triple Entry Step (Triple on 5th Wheels)  
Tinted Safety Glass Windows  
**2" Thick (R-7) Sidewall Construction**  
4 Stabilizer Jacks with Sand Pads  
**WIDE-TRAX Stability Control Axles** (Trailers)  
HD Leaf Spring Suspension  
Two 20 lb. Dual LP Tanks (Travel Trailers)  
Two 30 lb. Dual LP Tanks (5th Wheels)



Heartland Recreational Vehicles  
1001 All-Pro Drive  
Elkhart, IN 46514

Product information is as accurate as possible as of the date of publication of this brochure. Due to Heartland's commitment to continuous product improvement - floorplans, materials, components, features, specifications, options, etc. are subject to change without notice or obligation to Heartland Recreational Vehicles. XLT specifications apply to coaches beginning with serial number 100768.

**Tow Vehicle Caution:** Owners of Heartland recreational vehicles are solely responsible for the selection and proper use of tow vehicles. All customers should consult with a motor vehicle manufacturer or their dealer concerning the purchase and use of suitable tow vehicles for Heartland products. Heartland disclaims any liability or damages suffered as a result of the selection, operation, use or misuse of a tow vehicle. Heartland's limited warranty does not cover damage to the recreational vehicle or the tow vehicle as a result of the selection of the tow vehicle.

See your nearest Heartland dealer to review a current model.



# A TRUE TEST!



## OVER 3,700 Pounds!

Plant Manager Steve Johnson was so confident in the superior design and strength of the SUNDANCE XLT roof construction that he offered to have his personal truck lifted up and set on the coach to test it! There is no "photoshop" work on these photos - the truck was set on the roof of the coach with no extra support and it passed the test with flying colors!

*NOTE: Heartland does not recommend, nor condone the setting of automobiles or trucks on the roofs of our recreational vehicles. This test was performed solely for advertising purposes to show the incredible strength of our laminated roof.*



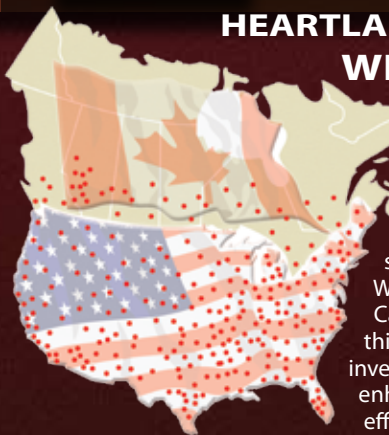
Heartland Recreational Vehicles  
1001 All-Pro Drive • Elkhart, IN 46514  
574-262-5992



## VENDOR 800# LABEL IN EACH HEARTLAND UNIT Call Direct for Faster Results! Toll-Free Warranty #s!

In an effort to offer the best possible service to Heartland owners, we provide a convenient sticker in each coach listing the warranty phone numbers of our most common vendor partners so that if you choose to, you may work directly with them to more quickly resolve issues or obtain replacement items. *NOTE: This service is provided for the benefit of our customers, so that they can speak immediately to the product component manufacturer. If an owner prefers to work through their purchasing dealer or Heartland's Customer Service Department, they may choose to do so.*

## HEARTLAND CUSTOMER SERVICE WE'VE GOT YOUR BACK!



One of the top reasons that Heartland Recreational Vehicles has become the third largest manufacturer of fifth wheels in the world in just four years is because of our commitment to customer service after the sale. With more than 40 men and women located in a dedicated facility servicing our customers and our dealers every day, Heartland remains steadfast in our commitment to deal with any and all service issues and get our customers back on the road as soon as possible. With a dealer network now approaching 400 locations across the U.S. and Canada, you are never very far from an authorized Heartland dealer. New this year, Heartland is excited to announce that we have made a significant investment in an electronic integrated information system that will greatly enhance our ability to ship the correct parts on time, as well as quickly and efficiently administer warranty claims and vendor support issues.

HEARTLAND PROUDLY PARTNERS WITH THE FOLLOWING QUALITY VENDORS  
in manufacturing our recreational vehicles:



Experience Virtual Tours and Product Walk-Through  
Videos at our Informative Web Site:

[www.HEARTLANDRVs.com](http://www.HEARTLANDRVs.com)



Your Authorized Heartland Dealer:

Product information is as accurate as possible as of the date of publication of this brochure. Due to Heartland's commitment to continuous product improvement - floorplans, materials, components, features, specifications, options, etc. are subject to change without notice or obligation to Heartland Recreational Vehicles.

**Tow Vehicle Caution:** Owners of Heartland recreational vehicles are solely responsible for the selection and proper use of tow vehicles. All customers should consult with a motor vehicle manufacturer or their dealer concerning the purchase and use of suitable tow vehicles for Heartland products. Heartland disclaims any liability or damages suffered as a result of the selection, operation, use or misuse of a tow vehicle. Heartland's limited warranty does not cover damage to the recreational vehicle or the tow vehicle as a result of the selection of the tow vehicle. See your nearest Heartland dealer to review a current model. 10M LITHO 7/08